

Crow's Feet

Designed by Char Hopeman
Featuring Jamestown by Nancy Gere
SIZE: 60" x 72"



FREE
PROJECT

THIS IS A DIGITAL REPRESENTATION OF THE QUILT TOP, FABRIC MAY VARY.

PLEASE NOTE: BEFORE MAKING YOUR PROJECT, CHECK FOR ANY PATTERN UPDATES AT WINDHAMFABRICS.COM'S FREE PROJECTS SECTION.








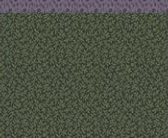



Crow's Feet

KEY	FABRIC	SKU	YD	CUTTING INSTRUCTIONS
A		43342-3	1	(1) 5-1/2" x WOF strip. Subcut into (6) 5-1/2" squares. (1) 4-1/2" x WOF strip. Subcut into (3) 4-1/2" squares. (1) 4" x WOF strip. Subcut (6) 4" squares. (4) 3" x WOF strips. Subcut (48) 3" squares. (1) 2-1/2" x WOF strip. Subcut (12) 2-1/2" squares.
B		43342-4	5/8	(1) 5-1/2" x WOF strip. Subcut into (6) 5-1/2" squares. (1) 4-1/2" x WOF strip. Subcut into (3) 4-1/2" squares. (2) 3" x WOF strips. Subcut into (24) 3" squares.
C		43343-4	5/8	(1) 5-1/2" x WOF strip. Subcut into (6) 5-1/2" squares. (1) 4-1/2" x WOF strip. Subcut into (3) 4-1/2" squares. (2) 3" x WOF strips. Subcut into (24) 3" squares.
D		43344-2	5/8	(1) 5-1/2" x WOF strip. Subcut into (6) 5-1/2" squares. (1) 4-1/2" x WOF strip. Subcut into (3) 4-1/2" squares. (2) 3" x WOF strips. Subcut into (24) 3" squares.
E		43344-4	1/2	(1) 4" x WOF strip. Subcut (6) 4" squares. (2) 3" x WOF strips. Subcut (24) 3" squares. (1) 2-1/2" x WOF strip. Subcut (12) 2-1/2" squares.
F		43345-2	1/2	(1) 4" x WOF strip. Subcut (6) 4" squares. (2) 3" x WOF strips. Subcut (24) 3" squares. (1) 2-1/2" x WOF strip. Subcut (12) 2-1/2" squares.
G		43345-3	3/4	(1) 5-1/2" x WOF strip. Subcut into (4) 5-1/2" squares. (1) 4-1/2" x WOF strip. Subcut into (2) 4-1/2" squares and (6) 4" squares. (4) 3" x WOF strips. Subcut (40) 3" squares. (1) 2-1/2" x WOF strip. Subcut (12) 2-1/2" squares.
H		43345-4	1/2	(1) 4" x WOF strip. Subcut (6) 4" squares. (2) 3" x WOF strips. Subcut (24) 3" squares. (1) 2-1/2" x WOF strip. Subcut (12) 2-1/2" squares.
I		43346-2	1/2	(1) 4" x WOF strip. Subcut (4) 4" squares and (8) 2-1/2" squares. (2) 3" x WOF strips. Subcut (16) 3" squares.



Crow's Feet

J		43346-3	1 1/4	(1) 5-1/2" x WOF strip. Subcut into (6) 5-1/2" squares. (1) 4-1/2" x WOF strip. Subcut into (3) 4-1/2" squares and (2) 4" squares. (1) 4" x WOF strip. Subcut (10) 4" squares. (6) 3" x WOF strips. Subcut (72) 3" squares. (2) 2-1/2" x WOF strips. Subcut (24) 2-1/2" squares.
K		43347-2	1/2	(1) 4" x WOF strip. Subcut (6) 4" squares. (2) 3" x WOF strips. Subcut (24) 3" squares. (1) 2-1/2" x WOF strip. Subcut (12) 2-1/2" squares.
L		43347-3	1	(1) 5-1/2" x WOF strip. Subcut into (6) 5-1/2" squares. (1) 4-1/2" x WOF strip. Subcut into (3) 4-1/2" squares. (1) 4" x WOF strip. Subcut (6) 4" squares. (4) 3" x WOF strips. Subcut (48) 3" squares. (1) 2-1/2" x WOF strip. Subcut (12) 2-1/2" squares.
M		43347-4	5/8	(1) 5-1/2" x WOF strip. Subcut into (6) 5-1/2" squares. (1) 4-1/2" x WOF strip. Subcut into (3) 4-1/2" squares. (2) 3" x WOF strips. Subcut into (24) 3" squares.
N		43348-2	5/8	(1) 5-1/2" x WOF strip. Subcut into (6) 5-1/2" squares. (1) 4-1/2" x WOF strip. Subcut into (3) 4-1/2" squares. (2) 3" x WOF strips. Subcut into (24) 3" squares.
O		43348-3	1 1/4	(2) 5-1/2" x WOF strips. Subcut into (12) 5-1/2" squares. (1) 4-1/2" x WOF strip. Subcut into (6) 4-1/2" squares. (1) 4" x WOF strip. Subcut (6) 4" squares. (6) 3" x WOF strips. Subcut (72) 3" squares. (1) 2-1/2" x WOF strip. Subcut (12) 2-1/2" squares.
P		43348-4	5/8	(1) 5-1/2" x WOF strip. Subcut into (6) 5-1/2" squares. (1) 4-1/2" x WOF strip. Subcut into (3) 4-1/2" squares. (2) 3" x WOF strips. Subcut into (24) 3" squares.
Q		43343-1	1/2	(1) 4" x WOF strip. Subcut (6) 4" squares. (2) 3" x WOF strips. Subcut (24) 3" squares. (1) 2-1/2" x WOF strip. Subcut (12) 2-1/2" squares.
R		43346-4	5/8	(7) 2-1/4" x WOF strips for binding
		Backing	4	
				66" x 78" piece of batting



Crow's Feet

PIECING INSTRUCTIONS

Blocks

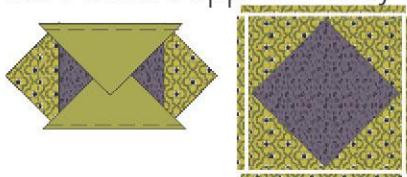
1. Cut each 4" and each 5-1/2" square diagonally in half once.



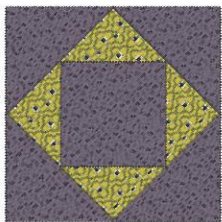
2. Fold (1) **P** 4-1/2" square in half in both directions and finger press the center of each edge. Fold (4) **A** 4" triangles in half and finger press the center of the long edge. Matching centers, align (2) **A** triangles on opposite sides of the **P** square and stitch using a 1/4" seam allowance. Press open.



3. Matching centers, align (2) **A** triangles on the remaining sides of the **P** square and stitching using a 1/4" seam allowance. Press open. Trim 1/4" past each **P** point. The square in a square center unit will measure approximately 6-1/8" square.



4. In the same way, add **P** 5 1/2" triangles to the center unit to make the block center. Block center should measure 8-1/2" square.



5. Draw a diagonal line on the wrong side of (8) **A** 3" squares. Pair each marked **A** square right sides together with a **P** 3" square. Sew 1/4" on either side of the drawn line, cut on the line, and press units open. Trim units to measure 2-1/2" square. Make a total of (16) **A/P** units.



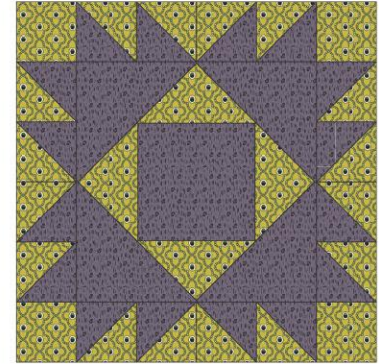
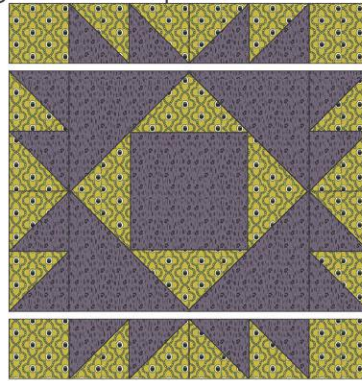
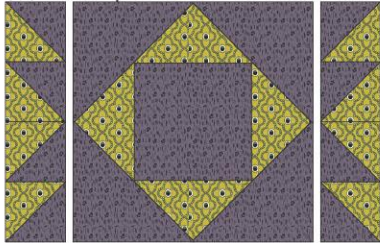
6. Sew (4) **A/P** units together as shown to make a side HST unit. Make 4.





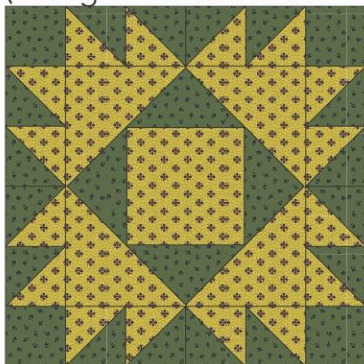
Crow's Feet

7. Sew side HST units to opposite sides of the block center. Sew **A** 2-1/2" squares to both ends of the remaining (2) side HST units. Sew these pieced units to the top and bottom of the block. Make (3) **A/P** positive blocks measuring 12-1/2" square.



8. In the same way, make (3) positive blocks from each of the following color combinations (background fabric listed first): **J/B, L/N, G/C, O/D, J/M.**

9. In the same way, make (3) negative blocks from each of the following color combinations (background fabric listed first): **H/L, E/O, Q/O, F/A, K/J.** Make (2) **I/G** negative blocks.



ASSEMBLING THE QUILT

Lay out the blocks into (7) rows of (5) blocks each, alternating the positive and negative blocks as shown. Sew the blocks into rows and join the rows to complete the quilt.

Finishing

Layer the backing, batting and quilt top together. Baste the layers together and quilt as desired. Use the (7) **R** 2-1/2" x WOF strips to bind the quilt.



Crow's Feet

